

# DECATUR BEEF ALLIANCE

RR 3 BOX 9 OBERLIN KS 67749 (785) 475-2212, FAX #: (785) 475-2717

## LOT CLOSEOUT SUMMARY

LOT: 7137 HF

1/14/2008

**GENERAL:**

DATE RECEIVED: 5/21/2007  
 HEAD RECEIVED: 88  
 PAY WEIGHT: 535  
 COST OF FEEDERS: \$115.55  
 HEAD SOLD: 87  
 AVG SALE DATE: 11/27/07  
 AVG SALE WEIGHT: 1142

**PERFORMANCE:**

ADG: 3.19  
 FE(DRY): 5.91  
 TOTAL DEADS: 1  
 DEATH LOSS%: 1.14  
 DOF: 189

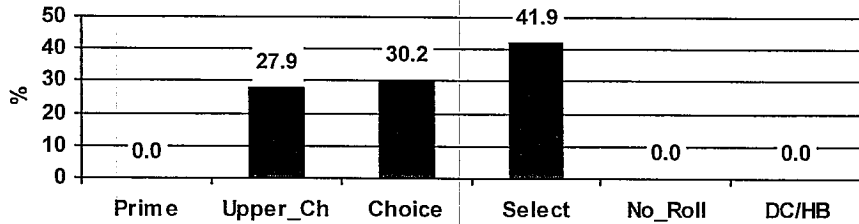
**EXPENSES:**

TREAT: \$341.89  
 PROCESSING: \$585.95  
 YARDAGE: \$820.45  
 FEED: \$34,912.26  
 COST OF GAIN: \$70.12  
 OTHER: \$804.91

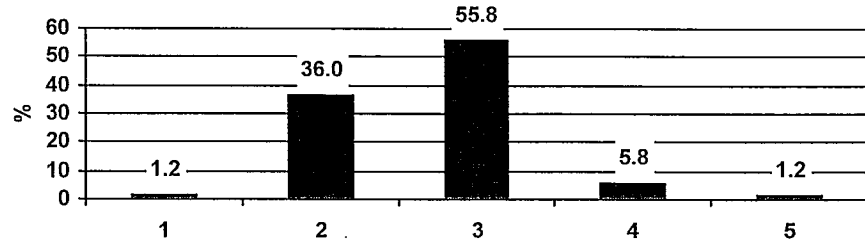
**RETURN:**

TOTAL SALES: \$90,862.56  
 /CWT: \$91.44  
 TOTAL NR: (\$1,014.73)  
 NR/HEAD: \$11.66

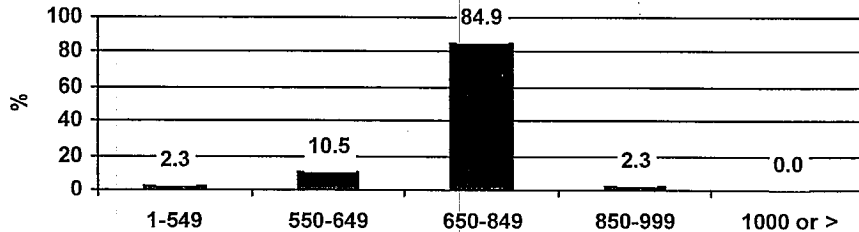
**Quality Grade Distribution**



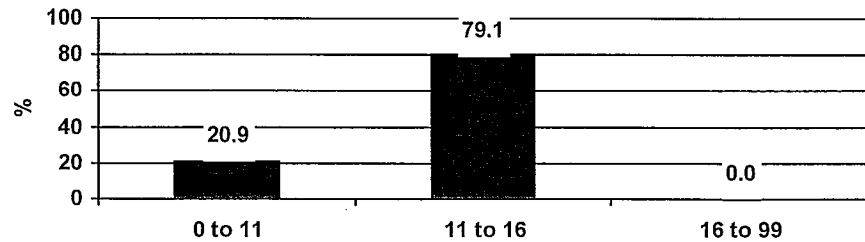
**Yield Grade Distribution**



**HCW Distribution**



**REA Distribution**



# DECATUR BEEF ALLIANCE

RR 3 Box 9 Oberlin, KS 67749-9405 Tel: 785/475-2212 Fax: 785/475-2717 Email: kevin@decaturfeedyard.com

## INDIVIDUAL ANIMAL CLOSEOUT - LISTED IN MARKET ADJUSTED NET RETURN ORDER

**LOT: 7137**

**TOTAL HEAD: 86 Heifers**

**LEGEND:**

RID: RANCH ID  
 VID: VISUAL ID TAG NUMBER  
 NR: NET RETURN/HD (PROFIT/LOSS)  
 TCOG: TOTAL COST OF GAIN/CWT  
 PROC: PROCESSING COST/HD  
 OTH: OTHER COST (ECM, INSURANCE, DUES)  
 TREA: TREATMENT COST/HD  
 COST: CATTLE COST/HD  
 FM: FRAME (CORNELL MODEL) @ RECEIVING  
 WTR: WEIGHT @ RECEIVING (PAY WEIGHT)

CLWT: CALCULATED LIVE SHRUNK WEIGHT @ SALE  
 DOF: DAYS ON FEED  
 OEDM: OPTIMUM END DATE METHOD (BF=BACKFAT, MN WT=MINIMUM WEIGHT, ICOG=INCREMENTAL COST GAIN, MX WT=MAXIMUM WEIGHT)  
 ADG: AVERAGE DAILY GAIN  
 FE: FEED EFFICIENCY (DRY MATTER)  
 QG: QUALITY GRADE (1=PRIME, 2=CHOICE, 3=SELECT, 4=NO ROLL, 5=CAB, 7=DARK CUTTER, 8=HARD BONE, 9=ST SILVER, 20=ANGUS PRIDE)

YG: FINAL YIELD GRADE SCORE  
 REA: RIBEYE AREA MEASUREMENT  
 REQ REA: RIBEYE REQUIRED FOR USDA PAR  
 HCW: HOT CARCASS WEIGHT  
 C/CWT: CARCASS PRICE/CWT  
 L/CWT: CALCULATED LIVE PRICE/CWT  
 DATEF: DATE FINISHED (SOLD)  
 ACV: ADDED CARCASS VALUE OVER LIVE PRICE  
 ADJ: MARKET ADJUSTED NET RETURN  
 RTR: RETURN TO RANCH

RID	VID	NR	TCOG	PROC	OTH	TREA	COST	FM	WTR	CLWT	DOF	OEDM	ADG	FE	QG	YG	REA	Req		DATEF	ACV	ADJ	RTR		
																		REA	REA						
	33375	-92	78	6.57	8.81	0.00	753	4.8	737	1378	172	BF	3.73	6.69	3	5.00	10.8	14.1	858	135.57	84.41	11/9/2007	-84	-588	661
	33389	-36	77	6.57	8.81	0.00	702	6.4	669	1278	172	BF	3.54	6.52	3	4.00	10.0	13.3	789	143.57	88.63	11/9/2007	-24	-437	666
Y 1031	33346	-166	75	6.57	8.81	16.87	578	8.0	477	1072	172	BF	3.46	6.14	2	4.00	8.8	11.0	600	143.57	80.35	11/9/2007	-109	-421	413
	33416	-174	73	6.72	10.30	13.99	575	8.2	472	1092	228	BF	2.72	5.60	3	3.00	9.5	11.1	606	140.46	77.94	1/4/2008	-170	-380	400
	33337	-155	74	6.57	8.81	0.00	646	8.3	574	1085	172	BF	2.97	6.24	3	2.00	12.7	11.3	622	139.96	80.23	11/9/2007	-112	-361	491
	33345	-15	68	6.57	8.81	0.00	588	8.2	490	1060	172	BF	3.32	5.70	3	4.00	10.2	11.8	669	143.57	90.61	11/9/2007	1	-354	573
	33406	-75	69	6.72	9.18	0.00	617	8.5	529	1189	186	SAFE	3.55	5.79	3	3.00	10.9	12.3	710	140.48	83.89	11/23/2007	-82	-343	541
	33404	-103	76	6.57	8.81	19.71	666	9.0	609	1191	172	BF	3.39	6.19	3	2.00	12.7	12.5	721	139.96	84.73	11/9/2007	-69	-342	563
	33342	-78	69	6.72	9.18	0.00	614	8.6	524	1164	186	BF	3.44	5.78	3	3.00	11.2	12.2	696	140.48	84.00	11/23/2007	-79	-340	536
	33367	-10	74	6.57	8.81	0.00	647	8.9	576	1191	172	BF	3.57	6.31	20	4.00	10.3	12.9	762	143.57	91.85	11/9/2007	16	-319	637
	33360	-70	72	6.72	9.18	16.59	617	8.3	529	1109	186	BF	3.12	5.77	3	2.00	12.0	11.9	673	143.48	87.07	11/23/2007	-42	-317	547

RID	VID	NR	TCOG	PROC	OTH	Req																			
						TREA	COST	FM	WTR	CLWT	DOF	OEDM	ADG	FE	QG	YG	REA	REA	HCW	C/CWT	L/CWT	DATEF	ACV	ADJ	RTR
	33413	-91	67	6.72	10.30	0.00	570	7.6	466	1211	228	BF	3.27	5.41	3	2.00	12.1	12.0	685	143.46	81.15	1/4/2008	-150	-316	479
	33382	-67	72	6.72	9.18	13.99	620	8.1	533	1044	186	SAFE	2.75	5.75	3	3.00	11.8	11.7	657	140.48	88.41	11/23/2007	-25	-314	553
	33350	-21	66	6.72	9.55	0.00	523	7.2	412	1032	200	BF	3.10	5.46	2	4.00	8.8	11.0	602	152.09	88.72	12/7/2007	-65	-313	503
	33347	-67	71	6.57	8.81	0.00	638	8.7	561	1131	172	BF	3.31	5.99	3	3.00	11.2	12.4	713	136.96	86.34	11/9/2007	-48	-310	571
	33371	-139	71	6.72	10.30	0.00	571	7.3	468	950	228	MN WT	2.11	5.54	2	2.00	10.0	10.3	539	144.04	81.72	1/4/2008	-112	-308	433
	33407	-34	73	6.72	9.18	15.94	647	9.0	576	1204	186	BF	3.38	5.88	3	2.00	12.0	12.8	746	143.48	88.90	11/23/2007	-23	-308	613
	33402	-29	73	6.72	9.18	19.71	633	8.8	552	1148	186	SAFE	3.20	5.78	3	3.00	10.5	12.7	738	140.48	90.31	11/23/2007	-6	-307	604
<b>Bottom 20%</b>		<b>-79</b>	<b>72</b>	<b>6.65</b>	<b>9.22</b>	<b>6.49</b>	<b>623</b>	<b>8.0</b>	<b>542</b>	<b>1141</b>	<b>188</b>		<b>3.22</b>	<b>5.92</b>		<b>3.06</b>	<b>10.9</b>	<b>12.1</b>	<b>688</b>	<b>141.98</b>	<b>85.51</b>		<b>-66</b>	<b>-354</b>	<b>544</b>

RID	VID	NR	TCOG	PROC	OTH	TREA	COST	FM	WTR	CLWT	DOF	OEDM	ADG	FE	QG	YG	REA	Req		HCW	C/CWT	L/CWT	DATEF	ACV	ADJ	RTR
																		REA	REA							
	33412	-21	73	6.57	8.81	0.00	685	9.0	646	1302	172	BF	3.82	6.22	3	3.00	12.0	13.8	835	136.96	87.83	11/9/2007	-35	-306	664	
	33369	-72	72	6.57	8.81	16.67	622	8.6	537	1074	172	BF	3.12	5.81	3	3.00	12.4	12.0	686	136.96	87.48	11/9/2007	-33	-306	551	
	33387	-59	72	6.72	9.18	16.67	596	8.4	500	1021	186	SAFE	2.80	5.66	3	3.00	9.7	11.6	649	140.48	89.30	11/23/2007	-16	-303	538	
Y 89	33351	-71	73	6.72	10.30	0.00	590	8.3	492	1250	228	BF	3.33	5.91	5	3.00	10.3	12.1	691	155.54	85.98	1/4/2008	-94	-302	519	
	33401	-48	70	6.72	9.18	9.74	628	8.4	546	1118	186	SAFE	3.08	5.72	3	2.00	13.9	12.0	686	143.48	88.04	11/23/2007	-31	-299	580	
	33420	-8	77	6.57	8.81	21.42	651	9.0	583	1272	172	BF	4.01	6.35	5	3.00	11.3	13.1	774	152.07	92.53	11/9/2007	25	-298	643	
	33336	-23	68	6.72	9.18	0.00	617	8.4	529	1150	186	SAFE	3.34	5.64	3	3.00	12.9	12.5	722	140.48	88.20	11/23/2007	-30	-295	594	
	33383	-36	72	6.57	8.81	0.00	618	8.7	531	1123	172	BF	3.44	6.08	2	3.00	10.4	11.9	678	148.57	89.70	11/9/2007	-9	-291	582	
	33370	-59	72	6.72	10.30	32.34	592	8.5	494	1102	228	BF	2.67	5.28	3	1.00	15.4	11.9	672	144.46	88.09	1/4/2008	-60	-287	533	
	33373	-27	71	6.72	10.30	15.73	634	8.7	555	1276	228	BF	3.16	5.57	3	2.00	12.8	13.2	783	143.46	88.03	1/4/2008	-70	-285	607	
	33395	-21	72	6.57	8.81	0.00	628	8.7	546	1150	172	BF	3.51	6.13	2	3.00	10.4	12.2	703	148.57	90.82	11/9/2007	3	-284	607	
	33414	-35	66	6.72	9.18	0.00	578	7.8	477	1118	186	SAFE	3.45	5.53	3	2.00	12.1	11.9	675	143.48	86.63	11/23/2007	-47	-282	543	
	33392	-38	70	6.57	8.81	0.00	604	8.1	511	1077	172	BF	3.29	5.94	2	3.00	11.3	11.6	650	148.57	89.66	11/9/2007	-9	-281	567	
	33348	-85	67	6.72	10.30	0.00	506	6.6	392	939	228	MN WT	2.40	5.25	2	3.00	8.2	10.4	547	144.04	83.91	1/4/2008	-90	-280	420	
	33381	4	68	6.72	9.55	0.00	622	8.4	537	1139	200	BF	3.01	5.64	3	3.00	11.5	12.6	731	142.05	91.17	12/7/2007	-44	-278	626	
	33418	-31	75	6.57	8.81	0.00	637	8.4	559	1086	172	BF	3.06	6.31	5	3.00	11.9	11.7	658	152.07	92.14	11/9/2007	17	-278	606	
Y 42	33349	-11	75	6.57	8.81	18.19	606	8.4	513	1131	172	BF	3.59	6.11	20	3.00	10.3	12.2	701	151.07	93.63	11/9/2007	35	-277	595	
	33399	12	71	6.57	8.81	0.00	641	8.9	565	1254	172	BF	4.00	6.09	2	3.00	11.5	13.1	771	148.57	91.34	11/9/2007	10	-277	653	
	33378	-31	67	6.72	10.30	0.00	587	7.9	487	1217	228	BF	3.20	5.33	3	2.00	13.5	12.5	727	143.46	85.70	1/4/2008	-95	-271	556	
	33380	-6	72	6.57	8.81	0.00	637	8.8	559	1134	172	BF	3.34	6.10	2	3.00	11.2	12.2	704	148.57	92.23	11/9/2007	19	-270	630	
	33377	-3	70	6.57	8.81	0.00	612	8.5	522	1160	172	BF	3.71	5.96	2	3.00	11.2	12.3	712	148.57	91.19	11/9/2007	8	-270	610	

RID	VID	NR	TCOG	PROC	OTH	TREA	COST	FM	WTR	CLWT	DOF	OEDM	ADG	FE	QG	YG	REA	Req		HCW	C/CWT	L/CWT	DATEF	ACV	ADJ	RTR
																		REA	REA							
Y 94	33364	29	71	6.72	9.18	0.00	643	8.7	570	1191	186	BF	3.34	5.92	2	3.00	12.7	12.6	733	151.72	93.38	11/23/2007	30	-269	672	
	33415	-12	77	6.57	8.81	0.00	666	8.8	609	1111	172	BF	2.92	6.51	5	3.00	12.7	12.0	686	152.07	93.90	11/9/2007	37	-269	654	
	33393	19	69	6.72	9.18	18.19	615	8.3	526	1226	186	BF	3.76	5.57	3	2.00	13.8	13.1	778	143.48	91.05	11/23/2007	3	-267	634	
	33398	45	68	6.72	9.18	0.00	642	9.0	568	1252	186	SAFE	3.68	5.71	3	3.00	12.4	13.6	820	140.48	92.01	11/23/2007	15	-265	687	
	33390	-28	74	6.72	9.18	0.00	614	8.2	524	1005	186	SAFE	2.58	6.14	5	2.00	11.6	11.0	596	158.22	93.83	11/23/2007	30	-264	586	
	33388	8	69	6.72	9.55	0.00	635	9.0	557	1143	200	BF	2.93	5.68	3	2.00	12.2	12.5	723	145.05	91.75	12/7/2007	-37	-264	643	
	33354	-35	70	6.71	10.30	0.00	575	8.1	472	1174	228	BF	3.08	5.66	20	3.00	11.8	11.8	670	154.54	88.19	1/4/2008	-62	-263	540	
	33366	37	78	6.57	8.81	0.00	702	5.5	669	1276	172	BF	3.53	6.63	5	3.00	12.4	13.4	797	152.07	94.98	11/9/2007	57	-262	740	
	33361	57	68	6.72	9.18	0.00	660	8.2	598	1280	186	SAFE	3.67	5.76	3	3.00	13.4	13.9	844	140.48	92.63	11/23/2007	23	-261	718	
	33419	7	68	6.72	9.18	0.00	633	8.8	552	1138	186	SAFE	3.15	5.71	3	2.00	13.3	12.5	726	143.48	91.54	11/23/2007	8	-259	640	
	33409	-13	68	6.57	8.81	0.00	583	7.7	483	1067	172	BF	3.39	5.74	2	3.00	12.3	11.6	652	148.57	90.78	11/9/2007	3	-257	570	
	33344	14	68	6.72	9.55	0.00	568	7.4	464	1041	200	BF	2.89	5.58	2	3.00	10.5	11.3	621	157.09	93.71	12/7/2007	-13	-257	582	
	33396	57	68	6.72	9.55	0.00	639	8.8	563	1239	200	BF	3.38	5.61	3	3.00	12.2	13.6	813	142.05	93.21	12/7/2007	-22	-256	697	
Y 960	33384	25	74	6.57	8.81	0.00	658	9.0	594	1170	172	BF	3.35	6.30	20	3.00	12.9	12.6	736	151.07	95.03	11/9/2007	53	-255	682	
	33352	-7	70	6.72	10.30	0.00	642	9.0	568	1199	228	BF	2.77	5.60	3	2.00	12.8	12.8	752	143.46	89.97	1/4/2008	-42	-255	635	
	33423	-32	70	6.57	8.81	0.00	621	8.6	535	1030	172	BF	2.88	5.82	3	2.00	12.7	11.8	668	139.96	90.77	11/9/2007	2	-253	589	
	33376	-58	69	6.72	10.30	13.34	510	7.2	396	992	228	BF	2.61	5.24	2	3.00	9.8	10.6	567	152.04	86.90	1/4/2008	-66	-248	452	
	33353	3	73	6.57	8.81	0.00	620	8.3	533	1043	172	BF	2.97	6.15	20	3.00	11.6	11.7	660	151.07	95.59	11/9/2007	53	-247	623	
	33358	46	69	6.72	9.18	0.00	621	8.4	535	1158	186	SAFE	3.35	5.74	2	3.00	12.6	12.5	722	151.72	94.60	11/23/2007	44	-247	667	
	33365	90	70	6.72	9.18	0.00	689	6.1	652	1369	186	MX WT	3.85	5.89	3	2.00	15.2	14.5	892	143.48	93.49	11/23/2007	37	-237	779	
	33422	44	73	6.57	8.81	0.00	647	8.9	576	1144	172	BF	3.30	6.19	20	3.00	12.4	12.6	733	151.07	96.79	11/9/2007	72	-235	691	

RID	VID	NR	TCOG	PROC	OTH	Req																	ACV	ADJ	RTR
						TREA	COST	FM	WTR	CLWT	DOF	OEDM	ADG	FE	QG	YG	REA	REA	HCW	C/CWT	L/CWT	DATEF			
	33408	82	75	6.72	9.18	0.00	686	9.0	648	1249	186	SAFE	3.23	6.33	20	2.00	14.0	13.1	777	157.22	97.81	11/23/2007	87	-230	768
	33368	32	71	6.57	8.81	0.00	614	8.3	524	1126	172	BF	3.50	6.03	9	3.00	12.5	12.3	709	151.57	95.44	11/9/2007	55	-230	646
	33391	54	72	6.57	8.81	0.00	633	8.7	552	1185	172	BF	3.68	6.11	5	3.00	12.9	12.8	751	152.07	96.37	11/9/2007	69	-227	687
	33374	46	67	6.72	9.18	0.00	592	8.2	494	1057	186	SAFE	3.03	5.60	2	3.00	11.8	11.9	671	151.72	96.32	11/23/2007	58	-227	637
	33386	23	66	6.57	8.81	0.00	607	8.6	516	1147	172	BF	3.67	5.60	3	2.00	13.8	12.8	750	139.96	91.51	11/9/2007	11	-226	631
Y 920	33410	65	71	6.72	9.18	0.00	625	8.8	542	1117	186	SAFE	3.09	5.95	5	3.00	12.3	12.3	709	155.22	98.52	11/23/2007	86	-224	690
	33421	57	71	6.72	9.18	0.00	615	8.4	526	1087	186	SAFE	3.01	5.90	5	3.00	12.1	12.1	689	155.22	98.39	11/23/2007	82	-223	672
	33405	97	73	6.72	9.18	15.29	622	8.3	537	1195	186	SAFE	3.54	5.91	20	3.00	11.1	13.1	777	154.22	100.28	11/23/2007	113	-222	720
	33355	34	77	6.57	8.81	18.19	643	9.0	570	1075	172	BF	2.94	6.14	20	2.00	13.6	12.1	692	154.07	99.18	11/9/2007	93	-222	678
	33340	93	74	6.72	9.18	0.00	697	4.9	663	1248	186	BF	3.15	6.22	2	2.00	13.7	13.3	792	154.72	98.19	11/23/2007	92	-221	791
<b>Middle 60%</b>		<b>4</b>	<b>71</b>	<b>6.65</b>	<b>9.22</b>	<b>3.76</b>	<b>623</b>	<b>8.3</b>	<b>542</b>	<b>1151</b>	<b>188</b>		<b>3.26</b>	<b>5.87</b>		<b>2.67</b>	<b>12.2</b>	<b>12.4</b>	<b>717</b>	<b>148.09</b>	<b>92.11</b>		<b>8</b>	<b>-263</b>	<b>627</b>

RID	VID	NR	TCOG	PROC	OTH	TREA	COST	FM	WTR	CLWT	DOF	OEDM	ADG	FE	QG	YG	REA	Req		HCW	C/CWT	L/CWT	DATEF	ACV	ADJ	RTR
																		REA	REA							
	33359	85	65	6.72	9.55	0.00	614	8.5	524	1229	200	BF	3.52	5.39	3	2.00	15.1	13.4	798	145.05	94.18	12/7/2007	-10	-214	699	
	33341	106	69	6.72	9.55	0.00	618	8.5	531	1149	200	BF	3.09	5.67	2	3.00	11.1	12.6	732	157.09	100.08	12/7/2007	58	-213	724	
	33385	28	73	6.72	10.30	0.00	624	8.8	539	1214	228	BF	2.96	5.84	20	2.00	12.2	12.5	725	157.54	94.08	1/4/2008	7	-212	652	
	33403	100	68	6.72	9.18	0.00	631	8.7	550	1177	186	BF	3.37	5.72	2	3.00	13.0	13.0	765	151.72	98.61	11/23/2007	92	-211	731	
	33356	24	72	6.72	10.30	0.00	641	8.8	565	1196	228	BF	2.77	5.71	2	2.00	12.8	12.5	721	155.04	93.46	1/4/2008	-1	-211	665	
Y 63	33357	60	67	6.72	9.18	0.00	588	8.1	490	1079	186	SAFE	3.17	5.58	2	2.00	13.1	11.9	675	154.72	96.79	11/23/2007	64	-207	649	
	33363	124	70	6.72	9.18	0.00	660	8.5	598	1215	186	BF	3.32	5.90	2	3.00	12.1	13.4	804	151.72	100.40	11/23/2007	116	-203	785	
	33394	71	68	6.57	8.81	0.00	622	8.7	537	1138	172	BF	3.49	5.73	2	2.00	15.1	12.5	727	151.57	96.83	11/9/2007	72	-195	693	
	33339	103	63	6.72	9.55	0.00	578	8.3	477	1204	200	BF	3.64	5.24	3	2.00	12.8	13.3	788	145.05	94.93	12/7/2007	-1	-192	682	
	33343	8	66	6.72	10.30	0.00	539	7.2	429	1009	228	BF	2.54	5.23	2	2.00	11.6	11.0	602	155.04	92.50	1/4/2008	-10	-188	547	
Y 4	33372	161	69	6.72	9.55	0.00	611	8.4	520	1222	200	BF	3.51	5.72	20	3.00	11.7	13.2	787	159.59	102.78	12/7/2007	95	-186	772	
	33362	121	64	6.72	9.55	0.00	563	7.9	457	1129	200	BF	3.36	5.31	2	2.00	13.3	12.2	698	160.09	98.98	12/7/2007	45	-176	684	
	33338	60	68	6.72	10.30	0.00	550	7.4	442	1091	228	BF	2.85	5.40	5	3.00	11.2	11.9	675	155.54	96.23	1/4/2008	30	-167	610	
	33397	95	67	6.57	8.81	0.00	606	8.6	513	1075	172	BF	3.26	5.63	2	2.00	13.9	12.3	711	151.57	100.25	11/9/2007	104	-165	701	
	33379	197	67	6.72	9.55	0.00	600	8.3	505	1247	200	BF	3.71	5.59	20	3.00	12.8	13.5	812	159.59	103.92	12/7/2007	111	-161	797	
	33400	143	68	6.72	9.18	0.00	607	8.3	516	1141	186	SAFE	3.36	5.71	5	2.00	13.2	12.7	745	158.22	103.31	11/23/2007	143	-152	751	
Top 20%		93	68	6.70	9.55	0.00	603	8.3	512	1157	200		3.25	5.58		2.38	12.8	12.6	735	154.32	97.96		57	-191	696	
<b>AVERAGE</b>		<b>3</b>	<b>71</b>	<b>6.66</b>	<b>9.28</b>	<b>3.63</b>	<b>619</b>	<b>8.2</b>	<b>537</b>	<b>1150</b>	<b>190</b>		<b>3.25</b>	<b>5.82</b>		<b>2.70</b>	<b>12.0</b>	<b>12.4</b>	<b>714</b>	<b>147.97</b>	<b>91.82</b>		<b>2</b>	<b>-269</b>	<b>623</b>	

HEAD COUNT (DEADS AND RAILERS OUT) 86  
 THANK YOU FOR FEEDING WITH DECATUR COUNTY FEED YARD

**DECATUR BEEF ALLIANCE**  
**DEADS AND RAILERS**

LOT	STATUS	RANCH ID	VISUAL ID	DESCRIPTION	DATEF	DOF	IN	WT	TOTAL COST	CATTLE COST	FEED	YARD	PROC	TREAT	OTHER
7137	DEAD		33417	COCCIDIO	5/25/07	4	422		\$544.47	\$533.10	\$2.73	\$0.20	\$6.56	\$1.58	\$0.31
7137	RAILER		33411	KELLY DOWNEY	8/2/07	73	524		\$864.53	\$613.55	\$206.85	\$3.65	\$6.56	\$27.74	\$6.18
<b>TOTAL HEAD:</b>		<b>2</b>					<b>39</b>		<b>\$1,409</b>	<b>\$1,147</b>	<b>\$210</b>	<b>\$4</b>	<b>\$13</b>	<b>\$29</b>	<b>\$6</b>